

Halogen Heater INSTRUCTION MANUAL

Read this manual carefully before operation

Pictures in this manual are for reference only, the product in kind prevail.



Model: CGHH12B

This instruction manual contains important information & recommendations that we would ask you to comply With to obtain best results from your products.

Dear Customer,

We thank you very much for having purchased one product of ours. We kindly ask you to read and save this instruction manual.

Main specifications: Halogen Heater

Rated Voltage	:	AC220~240V, 50-60Hz
Rated Input Power	:	1200W
Power Switch Settings	:	3 Levels
Auto Oscillation Angle	:	90 Degrees
Up-Down Degree:	:	45 Degrees

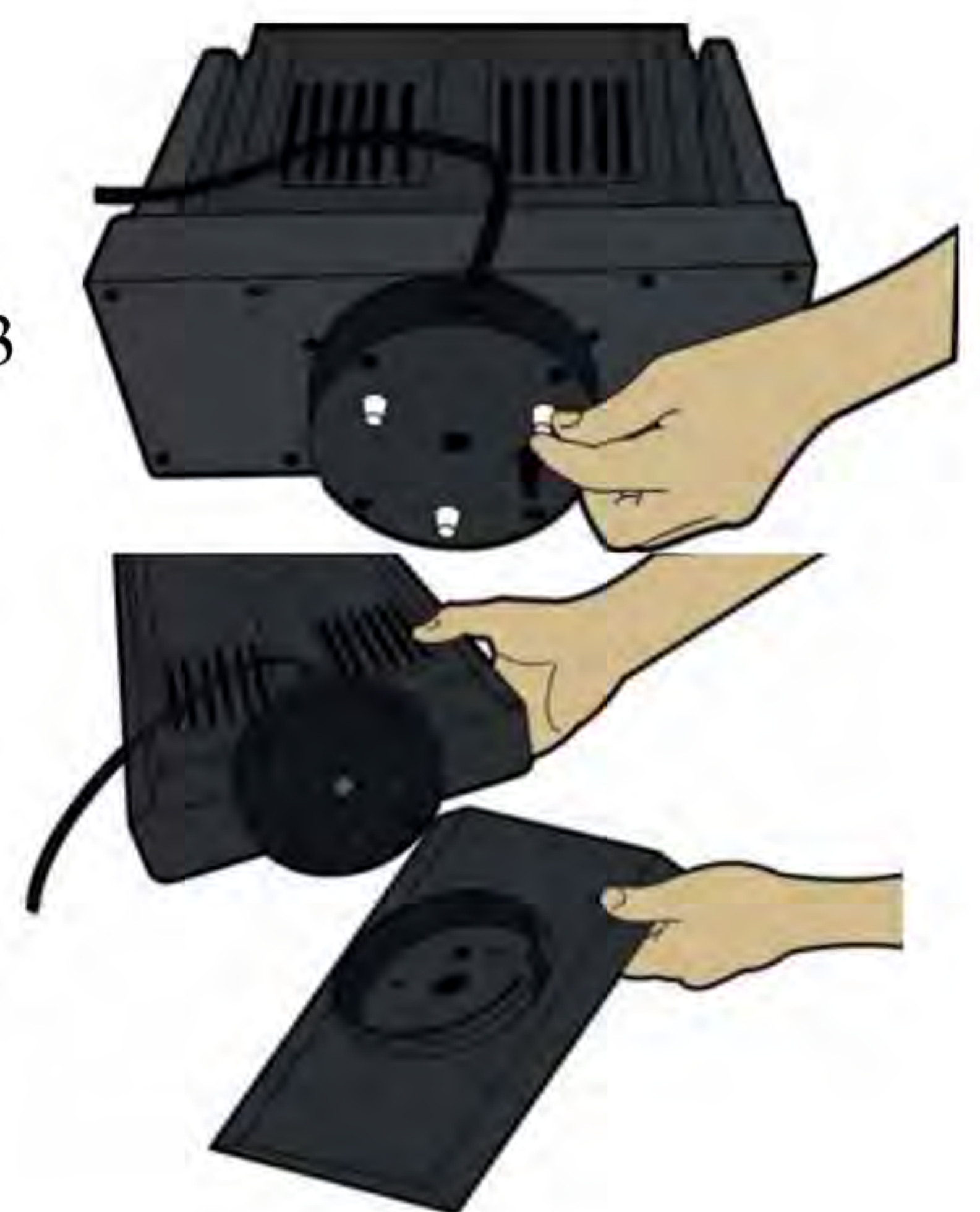
Parts Name:

1. Switch Knob
2. Reflecting Board
3. Heating element
4. Front Grill
5. Honeycomb Grill
6. Body
7. Base
8. Fixing screws
9. Turning board
10. Cable



Operation Steps:

1. Check the heating element before using it.
2. Put the heater on the flat place
3. Install the heater:
 - Take out heater body and the base, screw out the 3 screws from the bottom of the heater
 - Put the base on the bottom of the body, and fix by these 3 screws.
4. Insert the plug in to a suitable socket
5. Power steps, turning the switch knob:



Position 0	: The heater is "Off"
Position 1 on right side	: The heater in condition1 ---400 watts.
Position 2 on right side	: The heater in condition2 ---800 watts.
Position 3 on right side	: The heater in condition3 ---1200 watts.
Position I on left side	: The heater in condition1 ---400 watts with oscillation
Position II on left side	: The heater in condition2---800 watts with oscillation
Position III on left side	: The heater in condition3 --1200 watts with oscillation

6. Turning and Oscillation:

This heater can turn up-down and oscillation right and left in 90 degrees

7. After using it, turn the switch on position “0”, and pull out the plug.



Warning Instructions:

- Do not place inflammable objects in the heater's proximity.
- It is strictly prohibited to place anything on the heater, and therefore food cooking or heating on the heater is forbidden.
- Do not cover the heater.



- **Warning: do not cover the heater**
- Do not use this heater in immediate surrounding of a bath, a shower or a swimming pool.
- A damaged electrical cord may only be replaced by qualified electrician or in laboratory certified by the importer.
- The heater must not be located immediately below a socket-outlet.
- Do not use this heater with a programmer, timer or any other device that switches the heater automatically, since a fire risk exists if the heater is covered or positioned incorrectly.
- This appliance is not intended for use by persons (including children) with reduced physical, sensory or mental capabilities or lack of experience and knowledge, unless they have been given supervision or instruction concerning use of the appliance by a person responsible for their safety. Children should be supervised to ensure that they do not play with the appliance.
- Warning: This heater is not equipped with a device to control the room temperature. Do not use this heater in small rooms when they are occupied by persons not capable of leaving the room on their own, unless constant supervision is provided.

Cleaning Instructions:

- Cleaning the heater may be done with wet cloth only - spraying the heater with any sort of liquid is strictly prohibited!
- It is absolutely prohibited to enter any sort of objects into the heater.
- Do not clean the heater with detergents, alcohol, acids, thinner or turpentine

**A Quality Product
Of**

**CG CHAUDHARY®
GROUP**
Touching life everyday



**IMPORTANT INFORMATION FOR CORRECT DISPOSAL OF THE PRODUCT
IN ACCORDANCE WITH EC DIRECTIVE 2002/96/EC.**



At the end of its working life, the product must not be disposed of as urban waste. It must be taken to a special local authority differentiated waste collection centre or to a dealer providing this service.

Disposing of a household appliance separately avoids possible negative consequences for the environment and health deriving from inappropriate disposal and enables the constituent materials to be recovered to obtain significant savings in energy and resources. As a reminder of the need to dispose of household appliances separately, the product is marked with a crossed-out wheeled dustbin.