

Slow Juicer INSTRUCTION MANUAL

Read this manual carefully before operation

Pictures in this manual are for reference only, the product in kind prevail.



Model: CGMRJE01

**This instruction manual contains important information
& recommendations that we would ask you to comply
With to obtain best results from your products.**

IMPORTANT SAFEGUARDS

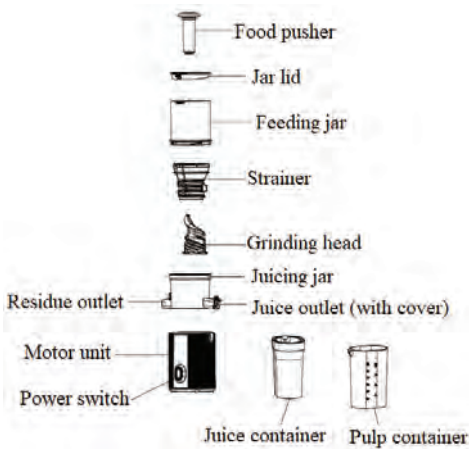
When using the electrical appliance, the below basic safety precautions should be followed.

1. Read all instructions.
2. Before using check and ensure that the voltage power corresponds to the one shown on the appliance nameplate.
3. Do not operate any appliance with a damaged cord or plug or after the appliance malfunction or has been damaged in any manner. Return the appliance to the nearest authorized service facility for examination, repair or adjustment.
4. The use of accessories not recommended or sold by manufacture may cause fire, electric shock or injury.
5. Do not place on or near a hot gas or electric burner or in a heated oven.
6. Do not let cord hang over edge of table or counter.
7. Never run the appliance under no food condition.
8. Do not put your fingers or other objects into the juicer opening while it is in operation. If food becomes lodged in opening, use food pusher or another piece of fruit or vegetable to push it down. When this method is not possible, turn the motor off and disassemble juicer to remove the remaining food.
9. Do not push the food with hand, spoon, chopstick and clip etc. other than food pusher into the feeding jar when the appliance is connected to power source.
10. Always make sure the jar lid and feeding jar are clamped securely in place before the motor is turned on.
11. Sharp Blade-Always use food pusher.
12. Avoid contacting moving parts.
13. For the juicer, make sure the switch is at "OFF" position after each use of your juicer. Make sure the motor stops completely before disassembling.
14. Do not immerse the Motor Unit into water or other liquids.
15. All detachable parts must be dried completely after being cleaned, and then assemble them into appliance for next using.
16. Close supervision is necessary when any appliance is used by or near children.
17. Misuse may result in potential injury.
18. If the supply cord is damaged, it must be replaced by the manufacturer, its service agent or similarly qualified persons in order to avoid a hazard.
19. Always disconnect the juicer from the supply if it is left unattended and before assembling, disassembling or cleaning.

- 20. This appliance shall not be used by children. Keep the appliance and its cord out of reach of children.
- 21. Appliances can be used by persons with reduced physical, sensory or mental capabilities or lack of experience and knowledge if they have been given supervision or instruction concerning use of the appliance in a safe way and if they understand the hazards involved.
- 22. Children shall not play with the appliance.
- 23. Do not use outdoors.
- 24. Save these instructions.

HOUSEHOLD USE ONLY

KNOW YOUR JUICER





CAUTION: The ingredients loaded in the feeding jar can not exceed the MAX mark of the feeding jar, otherwise, the feeding jar lid may be easily pushed upwards because of the movement of ingredients and fall off during juicing, or when the Reverse rotation function is activated, the feeding jar may be loosened because of the movement of ingredients and then falls off as well as the machine can not work.

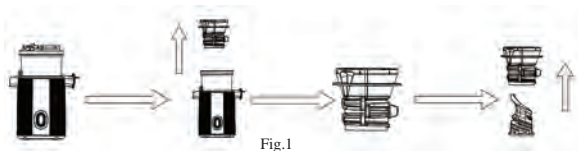
FUNCTION DESCRIPTION

The low speed juicing juicer is a unique system where fresh juice comes from squeezing rather than grinding. The slow juicer squeezes instead of grinding which allows the juice to maintain its pure color, natural taste, nutrients and vitamins. The juice will flow in your juice container from the juice outlet, and the pulp will be dispensed from the residue outlet and be collected by pulp container. When using the juicer, the pulp container and juice container must be placed well in position. The details will be described in the following.

FOR THE INITIAL USE

1. Unpack the appliance and place all parts on a horizontal surface.
2. Firstly, upwards remove the strainer from the juicing jar and then remove the grinding head from the strainer upwards (see Fig.1). Finally, immerse all the detachable parts and

accessories in warm soapy water and then rinse them and dry. But never immerse the motor unit in water for cleaning to prevent the risk of electric shock.



3. The correct assembling way will be described for details in below sections.

CAUTION: Before assembling, be sure the power cord is unplugged from the power outlet and the power switch is on the “—” position.

NOTES BEFORE USE

(1) Prepare all the required materials according to the characteristics of them

- Materials with hard fibre

The materials with hard fibre shall be cut into slices 3~5cm in length and 1.5~2cm in thickness.

- Leaf vegetables and materials with long & hard fibre (such as celery, wildcelery herb and collard etc.)

Cut the stems of the materials into slices 3~5cm in length and then roll up the leaves of the materials well.

- The fruit with hard core shall be pitted. The cores of peach, plum, mango, apricot and jujube shall not put into the feeding jar to avoid any malfunction.

- The materials with thick or hard peel shall be peeled before being put into the juicer for processing.

- It is not recommended to process the deeply-frozen ingredients. The frozen ingredients can only be used after being defrosted. Never use ice.

- Never process the materials with high vegetable oil or animal oil with this juicer to avoid the degradation and damage of the grinding head.

(2) Never put sugarcane, coconut, kudzu or cereal (e.g. bean, rice) without being soaked with water into this juicer for processing.

ASSEMBLE YOUR SLOW JUICER

1. Firstly assemble the juicing jar onto the motor unit by following the operation as below: Put the juicing jar downwards to make it be locked on the motor unit tightly (see Fig.2). Make sure the juicing jar is assembled in position properly otherwise the appliance will not operate.



Fig.2

2. Put the grinding head into the juicing jar and ensure the grinding head is covered well into the axis of the motor unit, and then put the strainer downwards to cover the grinding head (see Fig.3). Ensure that the symbol “▶” on the strainer shall align with the symbol “◀” on the juicing jar (see Fig.4).

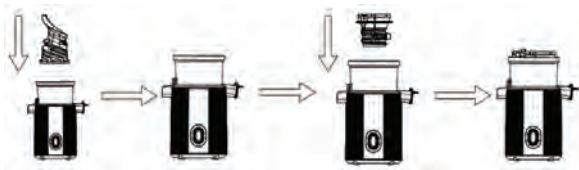


Fig.3



3. Assemble the feeding jar on the juicing jar correctly. Firstly, put the feeding jar downwards and make the symbol “▲” on the feeding jar align with the symbol “◻” on the juicing jar and then rotate the feeding jar clockwise until the symbol “◻” on the juicing jar aligns with the “▲” on the feeding jar (see Fig.5). Make sure the feeding jar is assembled in position properly otherwise the appliance will not operate. To disassemble the feeding jar from the motor unit, rotate it anticlockwise.

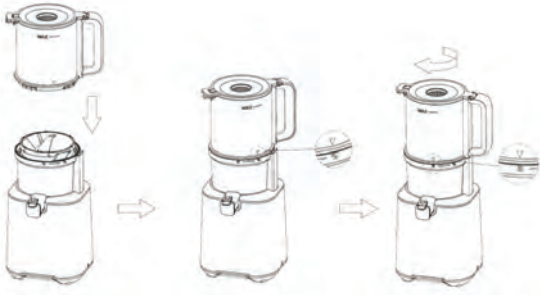


Fig.5

4. Place your juice container below the juice outlet and residue container below the residue outlet, then put the food pusher into the feeding hole well in position (see Fig.6). Until now, the Juicer is ready for operating.



Fig.6

NOTE: When need to move the whole appliance, please grasp the motor unit instead of the feeding jar to move it to avoid accident.

USING YOUR JUICER

1. Before attaching the power cord into the outlet, make sure the power switch is at the “—” position, the power switch has three settings: “▶” indicates “ON”, press the power switch to “▶” position to activate the motor and start making juice; “—” indicates “OFF” position, press the power switch to “—” position to turn off the machine; “◀” means Reverse rotation, which is only applicable for the conditions when the machine is stuck and not operable during working or when the feeding jar or juicing jar is difficult to remove after the juicing is completed.

CAUTION: Do not activate the Reverse rotation function when the feeding jar is filled with food, otherwise, the feeding jar will fall off easily and the machine can not work.

2. Make sure the juice container and the residue container are placed in position.
3. Well prepare the food needs to be processed. For example, the carrots shall be cut into half before being processed.

NOTES:

- (1) Please remove any hard seeds before juicing.
- (2) It is not recommended to process coconuts or similar hard foodstuffs, since this may damage the motor.
- (3) It is not recommended to process hard fruit or vegetable rich in fiber and starch, such as sugarcane.
- (4) The peel and pits should be removed from oranges, lemons, grapefruits and melons.
4. Open the jar lid and drop the prepared fruits or vegetables into the feeding jar, and then close the jar lid and place the food pusher into the feeding hole well in position.

CAUTION: The ingredients loaded in the feeding jar can not exceed the MAX mark of the feeding jar, otherwise, the feeding jar lid may be easily pushed upwards because of the movement of ingredients and fall off during juicing, or when the Reverse rotation function is activated, the feeding jar may be loosened because of the movement of ingredients and then falls off as well as the machine can not work.

NOTE: The food pusher is used for pushing the food down into the grinding head during working.

5. Connect the appliance to the power source, and then press the power switch to the “▶” position, the appliance starts to work. After a few minutes, the juice flows out.

6. During working, there are two ways for adding food. You can open the jar lid and then add the food into the feeding jar directly, at that time, the appliance will turn off, and the appliance will continue to work normally after the jar lid is closed again. Alternatively, you can cut the food into pieces and then add the food into the feeding jar through the feeding hole.

CAUTION: Do not turn the power switch from "▶" to "◀" or from "◀" to "▶" directly at any time during operation. If required, firstly press the power switch to "—" position and make the appliance stop running completely and then turn the power switch from "▶" to "◀" or from "◀" to "▶".

CAUTION: Do not operate the appliance before feeding food to avoid damaging the grinding head and strainer.

CAUTION: Do not put your fingers or other foreign objects into the feeding opening while it is in operation.

7. During operation, if the machine is stuck and not operable, please firstly press the power switch to "—" position and then press the reset button which is equipped at the bottom of appliance (see Fig.7). After it, press and hold the power switch to the "◀" position for few seconds then try operating again. When the reverse function cannot work, turn off the machine and reassemble following the instructions given. After reassembling please try to turn on the machine again.

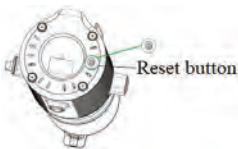


Fig.7

8. When the juice container is full (the max capacity is 600ml) or the food has been finished extracting, turn the power switch to the "—" position and empty the juice container and residue container before continuing extracting.

NOTE: The max operation time per time shall be less than 15 minutes. Minimum 30 minutes rest time must be maintained between continuous two cycles.

NOTE: Do not insert too much food to extract per time. During operation, once the juice

container is full, you must stop the appliance and empty the residue container before next cycle.

NOTE: When the juice in the juice container reaches the maximum mark of the juice container, please make the appliance stop working and clean the grinding assembly (including the juicing jar, grinding head, strainer and feeding jar), and then continue to extract juice. This can ensure a better juice-extracting effect. Long-time continuous juice-extracting can lead to excessive residue in the strainer, making the juice-dispensing be not fluent and the juice outlet of the strainer be blocked, reducing the juice output and even making the grinding assembly be difficult to be removed.

NOTE: During operation, if the interlock mechanism of the machine is disconnected, the motor will stop running to prevent from danger.

7. After finish, enjoy your juice in time for best taste. Any unused juice should be stored in the refrigerator.

CLEANING AND MAINTENANCE

1. Unplug the appliance and wait it cool down completely before cleaning.
2. To remove the jar lid, press the lid fastener and then lift the jar lid upwards.
3. Unlock the feeding jar by turning it in anti-clockwise and then remove it. If the feeding jar is difficult to remove, press and hold the power switch to the "◀" position to make the appliance continue working for 5 seconds, at that time, the grinding head rotates anticlockwise and then the feeding jar can be removed easily.
4. Lift the strainer and grinding head upwards to remove them from the motor unit, then remove the grinding head from the strainer.
5. In order to detach & clean the juicing jar more easily, plug in and run the juicer without load for about 30 seconds after removing the residue. If the juicing jar cannot be detached easily, please follow and repeat the following operation for two or three times:
Reverse—OFF—ON, at the same time, hold the feeding jar to detach it. After finish extracting juice, pour some water into the feeding jar to clean it so that it will be easier to be detached.

CAUTION: Do not turn the power switch from "▶" to "◀" or from "◀" to "▶" directly at any time during operation. If required, firstly press the power switch to "—"

position and make the appliance stop running completely and then turn the power switch from "▶" to "◀" or from "◀" to "▶".

6. Empty the residue container, and then clean the feeding jar, grinding head, strainer, juicing jar, residue container and juice container under running water. To clean the strainer more completely, you can push the handle of the strainer aside to separate it for better cleaning (see Fig.8).

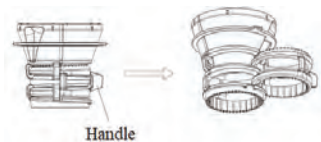


Fig.8

CAUTION: Do not use metal tools for cleaning, as this will damage the machine.

7. If you need to clean the residue outlet thoroughly, you shall firstly push the buffer plate (see Fig.9) upwards and then rinse it under the running water, shake the buffer plate up and down during cleaning so as to clean the residue outlet completely.



Fig.9

8. Wipe the outside of motor unit with a damp cloth. Never immerse the motor unit in water.

9. Dry all parts and assemble all parts well and then store the appliance at a dry place. The juice container can be stored in the residue container.

RECIPES

Spinach and Banana Juice

(For 2 servings)

- Spinach 120 g (4.2 oz.)
- Banana 180 g (6.4 oz.)
- Apple 300 g (10.6 oz.)
- Lemon 20 g (0.7 oz.)

Carrot and Orange Juice

(For 2 servings)

- Carrot 300 g (10.6 oz.)
- Banana 120 g (4.2 oz.)
- Orange 210 g (7.4 oz.)
- Lemon 10 g (0.4 oz.)

Carrot and Apple Juice

(For 2 servings)

- Carrot 300 g (10.6 oz.)
- Apple 300 g (10.6 oz.)
- Lemon 30 g (1.1 oz.)

Paprika and Tomato Juice

(For 2 servings)

- Red paprika 120 g (4.2 oz.)
- Tomato 200 g (7.1 oz.)
- Banana 60 g (2.1 oz.)
- Lemon 10 g (0.4 oz.)
- Apple 200 g (7.1 oz.)

Carrot and Tomato Juice

(For 2 servings)

- Carrot 200 g (7.1 oz.)
- Tomato 160 g (5.7 oz.)
- Orange 100 g (3.5 oz.)
- Lemon 30 g (1.1 oz.)

ENVIRONMENT FRIENDLY DISPOSAL



You can help protect the environment!

Please remember to respect the local regulations: hand in the non-working electrical equipments to an appropriate waste disposal center.



A Quality Product Of

**CG CHAUDHARY®
GROUP**
Touching life everyday



IMPORTANT INFORMATION FOR CORRECT DISPOSAL OF THE PRODUCT IN ACCORDANCE WITH EC DIRECTIVE 2002/96/EC.

At the end of its working life, the product must not be disposed of as urban waste. It must be taken to a special local authority differentiated waste collection centre or to a dealer providing this service.

Disposing of a household appliance separately avoids possible negative consequences for the environment and health deriving from inappropriate disposal and enables the constituent materials to be recovered to obtain significant savings in energy and resources. As a reminder of the need to dispose of household appliances separately, the product is marked with a crossed-out wheeled dustbin.

Visit us at: www.cginspiringlife.com