



Stand Fan INSTRUCTION MANUAL

Read this manual carefully before operation

Pictures in this manual are for reference only, the product in kind prevail.



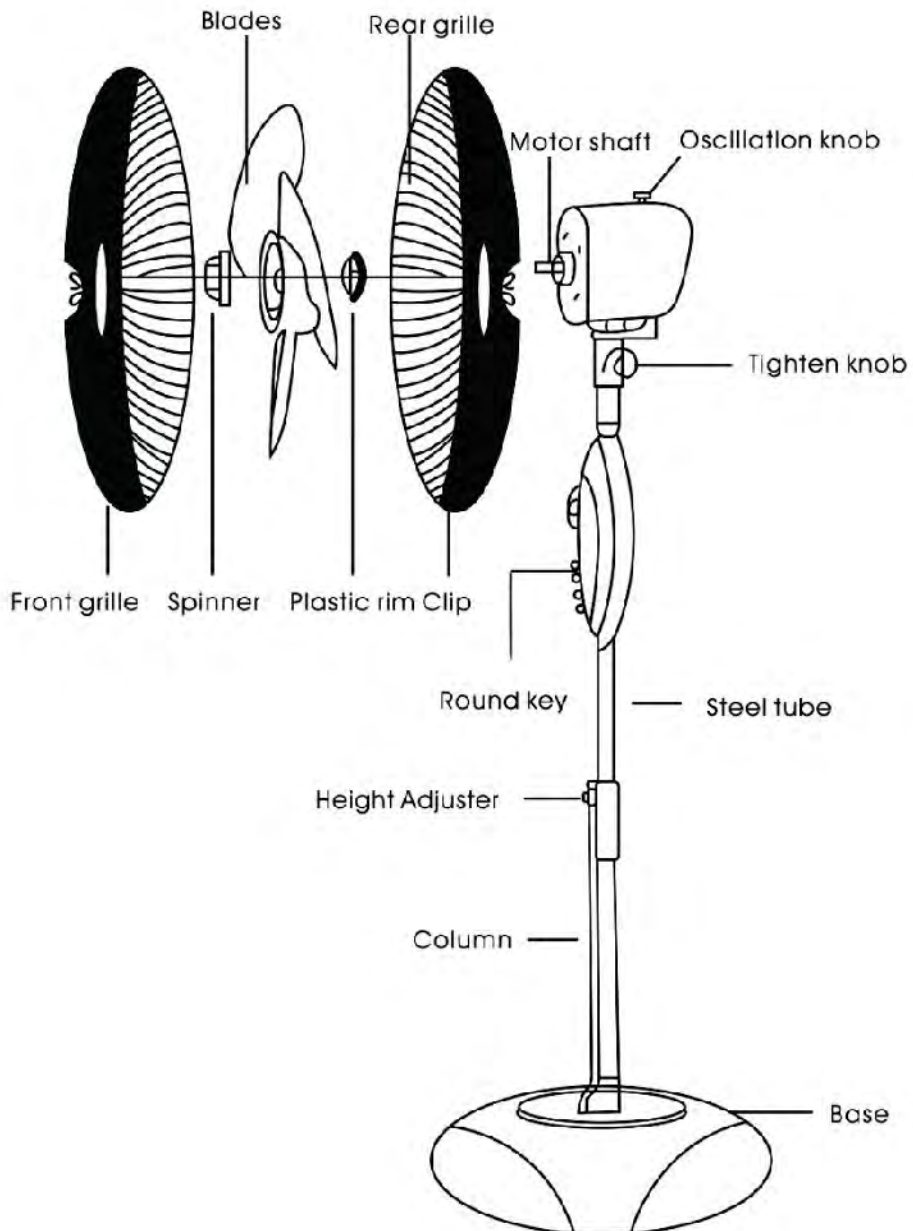
Model: CGSF16A05T/ CGSF16A05TRA/ CGSF16A05TGA

This instruction manual contains important information
& recommendations that we would ask you to comply
with to obtain best results from your products.

**CG CHAUDHARY®
GROUP**
Touching life everyday

(Pls. Read and save these instructions carefully)

Assembly diagram:



SPECIFICATION:

Rated voltage: 220-240V- Rated Freq: 50Hz Input power: 60W

PULES FOR SAFE OPERATION:

1. To be familiar with the fan operation, please read all these instructions carefully before use.
2. Please match the power with the rated voltage and frequency of fan.
3. Please not insert fingers, pencils, or any other objects through the grille when the fan is running.
4. Disconnect power when moving fan.
5. Unplug the power plug before cleaning the fan

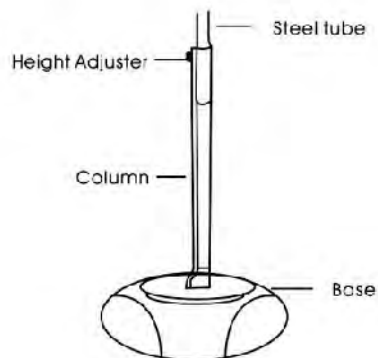
OVER-HEAT PROTECTION FUNCTION

A thermostat was built-in motor. The fuse will be auto-cutout when motor temperature exceed the limit caused by any accidents. So plastic pieces will be well protected from burningout and distortion.

ASSEMBLY INSTRUCTIONS

BASE AND PILLAR ASSMBLY

1. Take out base and pillar part from the carton.
2. Revolve the height adjustor anti-clockwisely out, draw the steel tube out of the pillar. Then revolve the height adjustor clock-wisely to fasten it.
3. Locate the pillar proper into the base, take the screw nut from the plastic bag and fit it to the pillar from the bottom of the base and fasten it.
4. Adjut the height adjustor to meet you requirement of the height of the wind sending.

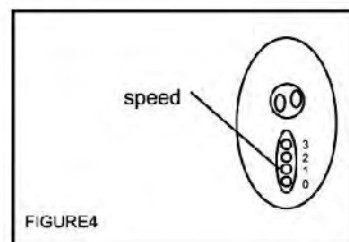
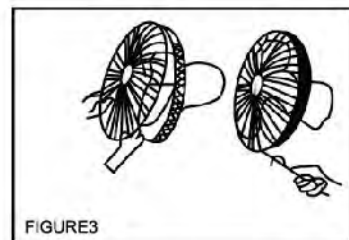
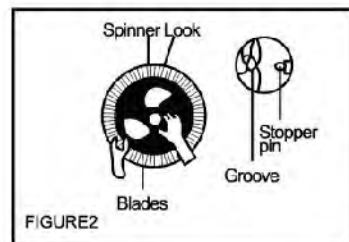
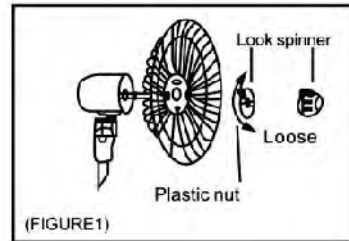


FAN BODY AND COLUMN ASSEMBLY:

Unscrew the fixing knob on the back of the bottom of fan body, emptied the hole in the bottom of fan body, Put extension column into the hole of the fan body, then tighten the fixing knob.

BLADE AND GRILLES ASSEMBLY

1. Remove the spinner and the plastic nut from the front side of the motor shaft then tighten the plastic nut. Take the plastic rim out of packing carton, slip the ring of the rear grille into the deep stof of the plastic rim, cscrow the bolt in the joint of the rim properly.(FIGURE 1)
2. Discard PVC sleeve on shaft. Insert the blade into shaft, made sure the stopper pin is clipped in to the groove of the blade. Screw the spinner counter clockwise to tighten the blade.
(FIGURE 2)
3. After put the center piece of the front grille upright, slip the ring of the front grille into the another slot of the plastic rim, tighten the bolt in the joint of the rim by a screwdriver. (FIGURE 3)



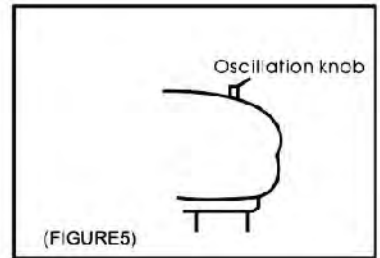
OPERATION INSTRUCTION

Speed control please use “speed” switch to turn on/off the fan and adjust the speed by push the swich to number-indicating.(FIGURE 4)

0-off 1-Low 2-Medium 3-High

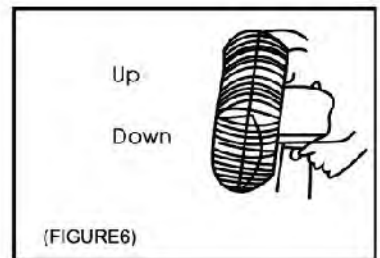
OSCILLATION CONTROL

To make the fan oscillating, Press the oscillation knob located on the top of the motor housing. To get the directional airflow, press the oscillating knob. once more. (Figure 5)



TILTING CONTROL

Unscrew the tilting knob, adjust the fan head to the desirable angle by holding the fan head, then tighten the knob... (Figure 6)



MAINTENANCE INSTRUCTIONS

The fan requires little maintenance. Do not try to fix it by yourself, Refer it to qualified service personnel if service is required.

1. Before cleaning and assembling, do not plug the pins into the socket.
2. To ensure adequate air circulation to the motor, Keep vents at the rear of the motor housing room dust, fluff and etc, A vacuum cleaner can not be used to clean these vents before unplug. Do not disassemble the fan to remove fluff.
3. Please wipe the exterior ports with a soft cloth soaking a mild detergent. Do not use any abrasive detergent or solvents to avoid scratching the surface.
4. Do not allow water or any other liquid in to the motor housing or interior parts.
5. If the power cord is damaged, it is strongly recommended to request a specialist to handle.

**A Quality Product
Of**

**CG CHAUDHARY®
GROUP**
Touching life everyday



**IMPORTANT INFORMATION FOR CORRECT DISPOSAL OF THE PRODUCT
IN ACCORDANCE WITH EC DIRECTIVE 2002/96/EC.**

At the end of its working life, the product must not be disposed of as urban waste. It must be taken to a special local authority differentiated waste collection centre or to a dealer providing this service.

Disposing of a household appliance separately avoids possible negative consequences for the environment and health deriving from inappropriate disposal and enables the constituent materials to be recovered to obtain significant savings in energy and resources. As a reminder of the need to dispose of household appliances separately, the product is marked with a crossed-out wheeled dustbin.

Visit us at: www.cginspiringlife.com