

Mixer Grinder

INSTRUCTION MANUAL

Read this manual carefully before operation

Pictures in this manual are for reference only, the product in kind prevail.



Model:

CGMG55BG Crush | CGMG55BW Crush | CGMG55C Mash
CGMG55C MixPro | CGMG65C MixMaster | CGMG80D GrindPro
CGMG120B TurboMix

This instruction manual contains important information
& recommendations that we would ask you to comply
with to obtain best results from your products.

IMPORTANT SAFEGUARDS

Other Safety Considerations:

- To protect against fire, electric shock and personal injury, do not immerse cord, plug or body in water or any other liquid.
- Do not operate the appliance with a damaged cord or plug or after the appliance has been damaged in any manner.
- Do not use accessories not recommended by the manufacturer, as there is a danger of fire, electric shock or personal injury.
- Do not place on or near a ignited gas burner, electric burner or near a hot oven.

Children:

- Do not allow children to use this Mixer Grinder. Children are vulnerable in the kitchen, particularly when unsupervised and if appliances are being used or cooking is being carried out.
- Teach children to be aware of dangers in the kitchen, warn them of the dangers of reaching up to areas where they cannot see properly or should not be reaching.

Main Wire Cord:

- The main wire cord should reach without straining the connections.
- Do not let the main cord hangover the edge of a worktop where a child could reach it.
- Do not let the wire cord run across an open space e.g between a low socket and table.
- Do not let the wire cord run across a cooker or toaster or other hot area, which might damage the cable.

Electrical Requirements:

- Check that the voltage on the rating plate of your appliance corresponds with your house electricity supply, which must be A.C.
- If the socket outlets in your home are not suitable for the plug supplied with this appliance, the plug should be removed and the appropriate one fitted.

Overload Protector:

- The Mixer Grinder is protected against the sudden overloads. In case such a situation occurs, then your mixer grinder will automatically turn off.
- To restart the unit, please wait for 2-3 minutes to allow the motor to cool down and also remove the cause of overload. Press the button located at the bottom of the mixer grinder to restart the unit.

How to fit the jars:

Hold the jar and check if the blade moves freely and rotates. Place the ingredients in the jar. Cover the jar with lid. Place the jar on the basic unit and then turn it clockwise to lock it in the top socket. Plug in. Lid has hands free operation, support lid gently by hand and switch on using the 1st speed and then move on to a higher speed as per the requirement. Switch off after operation. For unlocking the jar, turn it anticlockwise.

How to use Transparent Blending Jar with fruit filter:

- Blending jar can be used for liquidizing fruit juices, soups, cocktail, milkshakes, purees etc.
- Minimum capacity of blending jar is up to blade level and maximum capacity is 2/3rd of the jar.
- Use Fruit filter to separate fruit pulp and get smooth juice & shakes.
- Place and lock the jar on the main unit, place the fruit filter inside and fix the lid on the jar. While using the fruit filter you add additional pieces of fruits or ingredients by removing the fruit filter cap on the lid.

How to use Stainless Steel Wet Grinding Jar:

- Wet grinding jar can be used for grinding items like soaked rice and dal batter, soups, purees. Ideal for grinding of hot ingredients.
- The minimum capacity of grinding jar is up to blade level of the jar maximum capacity is 1/2 of the jar.
- Fill the jar with the solids for wet grinding and fix the lid tightly on the jar.
- Place and lock the jar on the main unit.
- If needed, more water can be added. Now switch on the mixer for one minute and you will get finely grinded batter or purees.
- If ingredients need to be stirred during wet grinding of rice and dal, stop mixer, use spatula to stir and get best results.

How to use Stainless Steel Dry Grinding Jar:

- This jar can be used for grinding black pepper, roasted coffee seeds, turmeric, coriander, red chilies and Garam masala etc. The jar should not be filled more than 1/2 of the total capacity.
- Ensure that the jar is absolutely clean and dry.
- Fill the jar with ingredients. Place the lid on the jar and fit the jar on the main unit.
- Grind at 1st speed for 15 seconds and move to higher speeds.
- Specially for turmeric grinding, first break into smaller pieces and then grind to get best results.

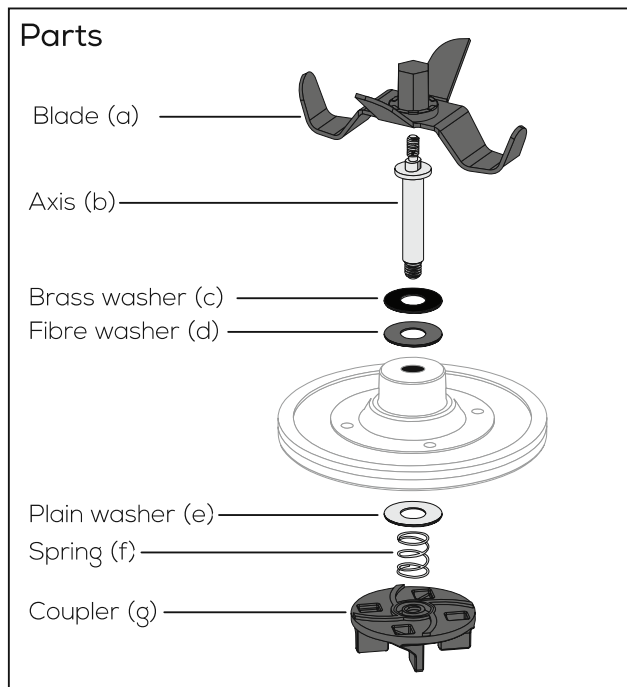
How to use Stainless Steel Chutney Jar:

- Chutney jar can be used for fine wet grinding of coriander leaves, coconut, green chilies, chutney etc. The jar must be filled up to the blade level. The jar should not be filled more than 1/2 of the jar capacity.
- Put the ingredients into the chutney jar.
- Add a small quantity of water during chutney grinding.
- Tightly fit the lid on the top of the jar place it on the main unit and lock before starting the mixer grinder.
- Stir the ingredients if necessary during grinding.
- The ingredients for grinding should not be too large. Cut / break ingredients into small pieces.

Cleaning of the jar:

- Pour a little soap and water into the jar, close the lid and run it on the main unit at 1st speed. This dislodges the food particles lodged inside the jar.
- Remove the jar and pour out the soap solution and rinse with tap water.
- Wipe the area along the blades with wet cloth and then dry.
- Wipe the body with a wet cloth and then dry.

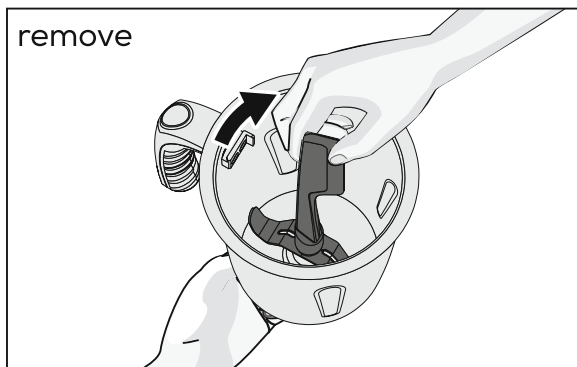
Blade changing procedure



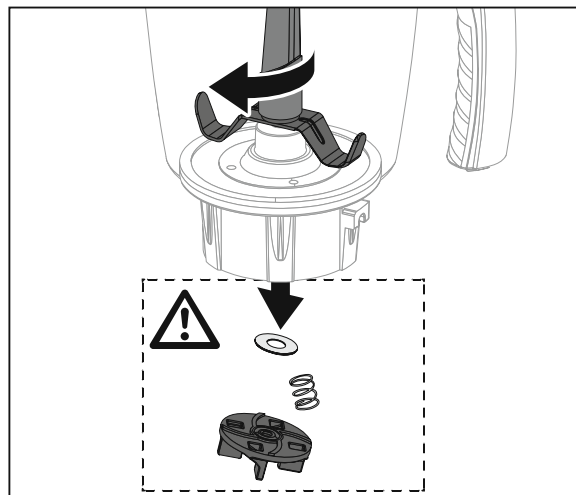
Removing the blade

1. Hold the coupler on the underside of the jar and using spatula rotate the blade nut in a clockwise direction.

remove

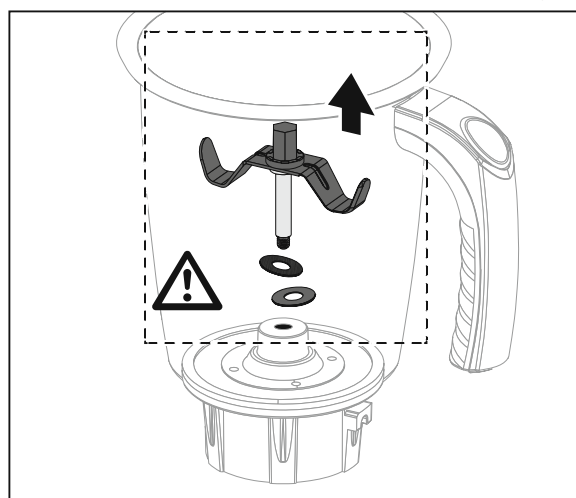


2. If the coupler is removed (the blade sticks together with the axis), washer sand spring will come off when you take blade assembly out of the jar.



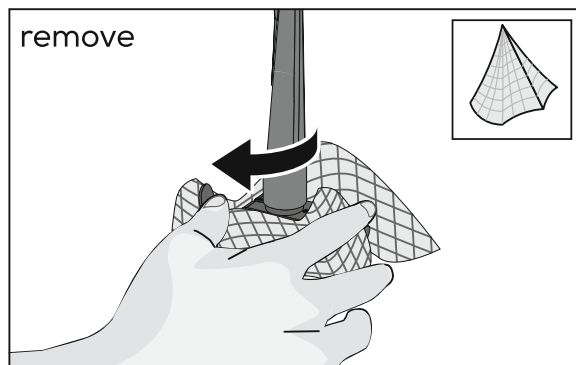
- ⚠ Small parts – be careful not to lose or forget them.**

3. Take the blade assembly out of the jar

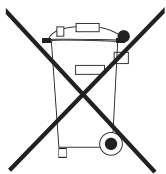


4. Hold the blade assembly with cloth. Using spatula untighten the blade nut (turn in a clockwise direction).

remove



A Quality Product Of



IMPORTANT INFORMATION FOR CORRECT DISPOSAL OF THE PRODUCT IN ACCORDANCE WITH EC DIRECTIVE 2002/96/EC.

At the end of its working life, the product must not be disposed of as urban waste. It must be taken to a special local authority differentiated waste collection centre or to a dealer providing this service.

Disposing of a household appliance separately avoids possible negative consequences for the environment and health deriving from inappropriate disposal and enables the constituent materials to be recovered to obtain significant savings in energy and resources. As a reminder of the need to dispose of household appliances separately, the product is marked with a crossed-out wheeled dustbin.